



NEW ZEALAND'S EXCHANGE  
TE PAEHOKO O AOTEAROA

# NZX, 2020e

NZX Limited - Monthly Shareholder Metrics

December 2019

These shareholder metrics represent the key operations of NZX's business.

## Core Markets

NZX Listed Issuers	Dec 2019	Change YoY
Total equity securities	131	-4.4%
Total fund securities	45	21.6%
Total retail debt securities	138	4.5%
Total wholesale debt securities	5	-
Total other securities	4	-33.3%
Total listed securities	323	3.5%
Total NZX Main Board equity issuers	129	7.5%
Total NZX Main Board fund issuers	45	21.6%
Total NZX Debt Market retail debt issuers	51	2.0%
Total NZX Debt Market wholesale debt issuers	2	-
Total other issuers	3	-40.0%
Total unique issuers	200	1.0%

Market Capitalisation	Dec 2019	Change YoY	% of GDP
Total market capitalisation	\$202,003 m	23.2%	67.1%
All equity	\$161,492 m	24.7%	53.7%
All funds	\$4,966 m	32.2%	1.6%
All other	\$5 m	-9.3%	0.0%
Total NZX Main Board	\$166,463 m	24.9%	55.3%
Retail debt	\$32,171 m	6.7%	10.7%
Green bonds	\$900 m	33.9%	0.3%
Wholesale debt	\$2,469 m	-	0.8%
Total NZX Debt Market	\$35,540 m	15.3%	11.8%

Cash Market	Dec 2019	Change YoY
Total value traded	\$2,756 m	9.4%
Daily average value traded	\$138 m	4.0%
On-market value traded	\$1,695 m	21.5%
% of value on-market	61.5%	11.0%
Total trades	462,636	93.5%
Daily average trades	23,132	83.9%

Total Equity Transactions	Dec 2019	Change YoY
Total trades	459,754	94.4%
Value traded	\$2,640 m	8.6%
% of value on-market	63.0%	12.3%
Average on-market trade size	\$3,641	-37.7%

Total Debt Transactions	Dec 2019	Change YoY
Total trades	2,882	14.7%
Value traded	\$116 m	33.0%

Cumulative Numbers - YTD	Dec 2019	Change YoY
Number of trades	4,863,776	49.7%
Total value traded	\$37,846 m	-1.0%
% of value on-market	54.3%	5.3%

Capital Raising	Dec 2019	YTD	Change YoY
Total capital raisings	\$1,722 m	\$18,666 m	95.7%

New Capital Listed	Dec 2019	YTD	Change YoY
Total capital listed by all issuers	\$180 m	\$7,158 m	46.2%
Equity listings	-	\$630 m	3072.8%
Fund listings	-	\$39 m	3549.9%
Retail debt listings	\$180 m	\$5,019 m	2.9%
Wholesale debt listings	-	\$1,470 m	-

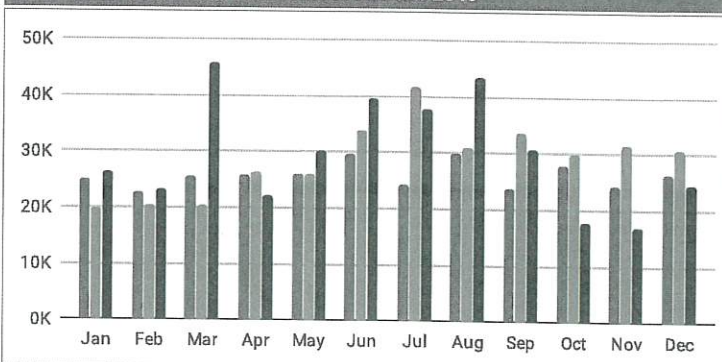
Secondary Capital Raisings	Dec 2019	YTD	Change YoY
Total capital raised by all issuers	\$1,542 m	\$11,508 m	147.9%

Total equity raised - NZ issuers	\$58 m	\$2,504 m	65.9%
Total equity raised - dual or foreign issuer	\$1,131 m	\$5,399 m	316.1%
Total funds raised - NZ issuers	\$112 m	\$746 m	-10.0%
Total funds raised - dual or foreign issuer	\$70 m	\$520 m	104.6%
Total debt raised	\$171 m	\$1,254 m	-13.4%
Total wholesale debt raised	-	\$1,085 m	-

Total number of secondary capital raising events	268	2,184	66.8%
Equity issuers - capital raised < \$10m	28	378	8.3%
Equity issuers - capital raised ≥ \$10m < \$100m	4	36	63.6%
Equity issuers - capital raised ≥ \$100m	2	14	366.7%
Fund issuers - capital raised	229	1,726	90.9%
Debt issuers - capital raised	5	27	-12.9%
Wholesale debt issuers - capital raised	-	3	-

Derivatives	Dec 2019	Change YoY
Futures - total lots traded	18,813	-33.3%
Options - total lots traded	5,757	135.0%
Total derivatives lots traded	24,570	-19.9%
Total derivatives lots traded - YTD	358,928	3.8%
Open interest	43,495	-38.4%
Notional value traded (\$USD)	\$107 m	5.5%
Options to futures ratio	30.6%	252.5%
Block trade %	0.0%	-100.0%

Derivatives Total Lots Traded 2017 / 2018 / 2019



NZX Indices Performance	Dec 2019	Change YoY
S&P/NZX 50 Index (Gross)	11,492	30.4%
S&P/NZX 50 Index (Capital)	4,925	26.0%
S&P/NZX 50 Portfolio Index	7,108	29.3%
S&P/NZX Primary Sector Index	16,766	10.4%
S&P/NZX NZ Fixed Interest Composite Index	122	4.9%
S&P/NZX A-Grade Bond Index	5,664	5.2%

Clearing House / Depository	Dec 2019	Change YoY
Gross value of cleared trades over month	\$2,765 m	8.7%
Collateral held at month end	\$45 m	64.1%
Depository transactions	5,534	172.1%
Assets under custody in depository	\$3,473 m	382.6%
Value of stock lent over month	\$494 m	41.3%

Direct Data Products	Dec 2019	Change YoY
Proprietary security subscription products*	310	-0.6%
- products ≥ \$3,000 p.a.*	109	1.9%
- products < \$3,000 p.a.*	201	-2.0%

\* Proprietary security subscription products have been restated (including comparatives) to exclude subscriptions relating to the FundSource business which was sold during June 2019 and to consolidate multi-user licences to reflect the parent subscription only.

Dairy Data Subscriptions	Dec 2019	Change YoY
Dairy data subscriptions*	504	-8.5%
- products ≥ \$1,500 p.a. *	117	-12.7%
- products < \$1,500 p.a. *	387	-7.2%

\* Dairy Data Subscriptions have been restated (including comparatives) to consolidate multi-user licences to reflect the parent subscription only.

Wholesale Data	Dec 2019	Change YoY
Terminal numbers - professional*	5,990	-1.3%
Terminal numbers - retail*	1,454	10.7%
Licences - value ≥ \$20k p.a.	43	22.9%
Licences - value < \$20k p.a.	80	14.3%

\* 3 month average

Energy Contracts	Dec 2019	Change YoY
Operating / Technology contracts	17	6.3%
- contracts ≥ \$500k p.a.	4	0.0%
- contracts < \$500k p.a.	13	8.3%

## Fund Management

Total external funds under management \$3,969 m 36.0%

SuperLife	Dec 2019	Change YoY
Funds under management - KiwiSaver	\$1,023 m	29.2%
Funds under management - other	\$1,613 m	24.6%
Total	\$2,636 m	26.3%

Smartshares	Dec 2019	Change YoY
Funds under management - external	\$1,333 m	60.1%
Funds under management - SuperLife funds	\$2,134 m	28.5%
Total	\$3,467 m	39.0%
Units on issue	1,249 m	22.8%

## Wealth Technologies

Funds under administration \$2,297 m 15.6%

## Notes

- All figures are measured at the end of the last trading day of each month unless otherwise stated. Change refers to the change since the same period last year unless otherwise stated.
- Equity market capitalisation includes all securities quoted on the NZX Main Board (NZSX). With an overseas domiciled Issuer, the market capitalisation represents the amount that is held in New Zealand.
- Market capitalisation for the NZX Debt Market is the total nominal (face) value of all listed securities, excluding New Zealand Government stock.
- Funds include exchange traded funds, managed funds, listed investment companies and trusts.
- "Other" securities include options, warrants and options quoted on the NZX Main Board (NZSX).
- Please note these operational statistics are based on NZX's internal records, which are unaudited. Differences may arise between this data and that disclosed in subsequent audited financial statements. Differences may also arise between this data and the previously reported data due to rounding and classification restatements.

To enquire about information listed on this sheet, or to find out more about NZX products or services, please email: [data@nzx.com](mailto:data@nzx.com)